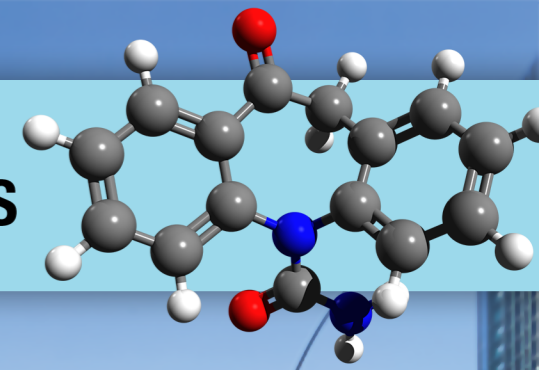


MAGMA BOND® ACRYLIC ADHESIVE PRODUCTS



| MAGMA BOND E1 | MAGMA BOND E2 | MAGMA BOND C1 | MAGMA BOND C2 | MAGMA BOND C3 | MAGMA BOND M1 |
|--|---|---|--|--|--|
| <p>Solvent XT GS, ABS Low 0.1mm Strong General purpose to fabrication work 30-60 Seconds 3 hours</p> | <p>Solvent GS & XT ABS, PVC, PP, PETG, HIPS-Styrene Low - Medium 0.3mm Strong General purpose to fabrication work 1-2 minutes 4 hours</p> | <p>Solvent GS XT, PVC, HIPS-Styrene Medium 0.5mm Strong General purpose to fabrication work 10 minutes 12 hours</p> | <p>Reactive(Catalyst) GS XT, PC, Plexiglas Resist®, Wood Medium - Thick 1 - 2mm Very Strong General purpose to fabrication work 1 hour 4 hours</p> | <p>Reactive(UVsunlight) GS XT, PC, Plexiglas Resist® Medium - Thick 1 - 2mm Very Strong General purpose to fabrication work 1 hour 4 hours</p> | <p>M1 is a formulated liquid designed to alter the viscosity of our adhesives and to effectively improve the preparation of bonded areas when applied; enhancing adhesion resulting in a stronger bond</p> |

- Adhesive Properties •
- Specific Application •
- Other Applicable Bonding Materials •
- Viscosity •
- Unsupported Gaps •
- Bond Strength •
- Product Versatility & Application •
- Initial Bond Strength •
- Full Bond Strength •

